

Resilient Surveillance Networks

Video Management System

Management Server (COE I-COMMAND® SERVER)



Digital Barriers

The I-Command Management Server is a powerful and intuitive management system for analogue, IP and hybrid security systems. It provides driver support for numerous IP and analogue devices and has support for multiple backup servers in order to ensure system integrity is maintained at all times.

Intuitive management interface

The I-Command Suite is a range of modular software/hardware products including I-Command Workstation interface, I-Command NVR Network Video Recording server, I-Command Server database manager and I-Command MultiView video wall display server.

The **I-Command Management Server** consists of two key elements: a server application and a management portal. The server application is responsible for I-Command system and IP device communications and simply runs as a background service on one or more server machines. The management portal is a license free application that, in addition to running on the server, can also be installed on multiple PCs. This allows supervisors to configure and administrate one or more I-Command systems remotely. Access and user rights are restricted via a password protected logon.

Practical operational benefits

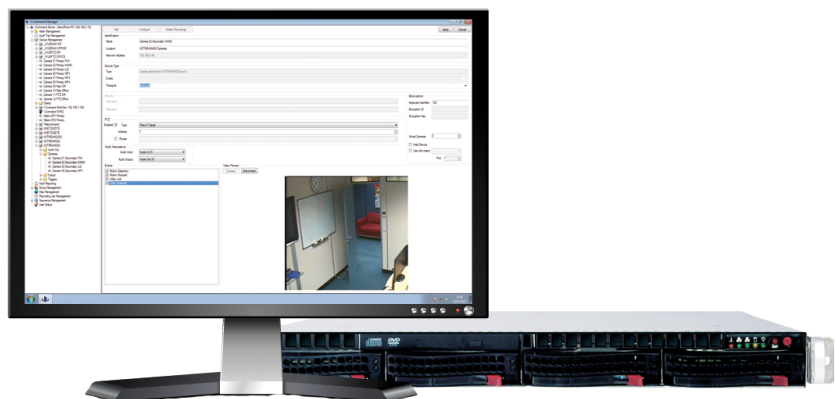
With experience of very large scale systems, complex network topologies and safety-critical requirements, COE solutions are engineered for exacting, fault-free core performance and ease of use.

I-Command is provided as a combined hardware-software system, in order to offer the following advantages:

- Optimum hardware specifications
- Optimised software pre-installed and pre-configured
- Ultra-quick system boot times
- Complete system support with extended warranty periods and dedicated remote access

Key features

- Intuitive visual alarm management interface with logic based alarm filters and configurable alarm actions such as video pop-up and automatic email or operator instructions. Complex alarms can be created by combining simple alarms and time schedules to form more complex alarm processing logic
- Straightforward management of users, user groups, devices (including PTZ cameras), alarms, triggers, schedules and recording jobs
- All system event and alarms are logged into a searchable and exportable audit trail. Events can be filtered according to event type and/or time. Audit trail reports in PDF format can then be generated from the filtered events list
- Operate IP and analogue PTZ cameras side by side and control Telecommand matrix switching within an IP system
- Support for legacy PTZ protocols such as COE Telecommand and Pelco-P combined with IP based protocols
- Remote configuration of multiple servers with the ability to backup, restore and copy system configurations. A recording wizard helps you through the steps required to create recording jobs
- Auto-discovers available devices on the network making integration of multiple manufacturers' equipment quick and easy



Product codes on reverse

Software

Applications: I-Command Workstation
Operating System: Windows Server Embedded 2008 64bit

Hardware

Processor: Intel Quad Core Xeon E5506 2.13GHz
Memory: 6GB DDR3 1333MHz RAM
Network: 100/1000BaseT
Hard drives: 2x 160GB OS Drives (Mirrored)
Drive bays: 4x hot swap SATA/SAS2 6GB (2 used by OS drive) Support for RAID5
Graphics: Onboard
Optical drive: DVD-ROM
Power supplies: Dual redundant with I²C and fan speed control
Cooling system: 4x hot-swap cooling fans

Connectors

1x VGA: Monitor
2x RJ45: Network
2x USB: Mouse, Keyboard, Media devices, KVM
2x PS2: Keyboard, Mouse, KVM

Physical

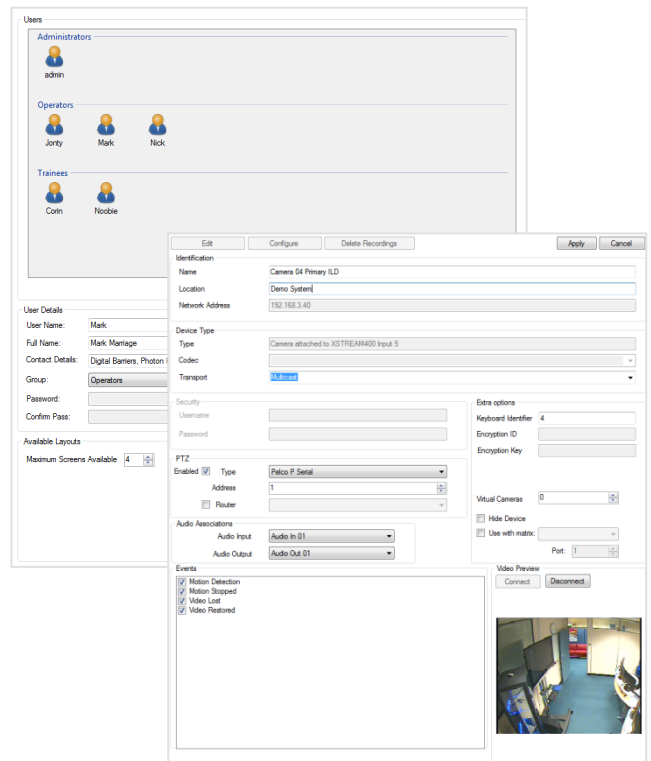
Physical Size: 19" (437mm) x 1U (43mm) x 650mm
Operating Temperature: 10°C to +35°C
Storage Temperature: -40°C to +70°C
Operating Humidity: 8% to 90% RH (non-condensing)
Power Requirements: 650W
Basic Shipping Weight: 19kg

Regulatory

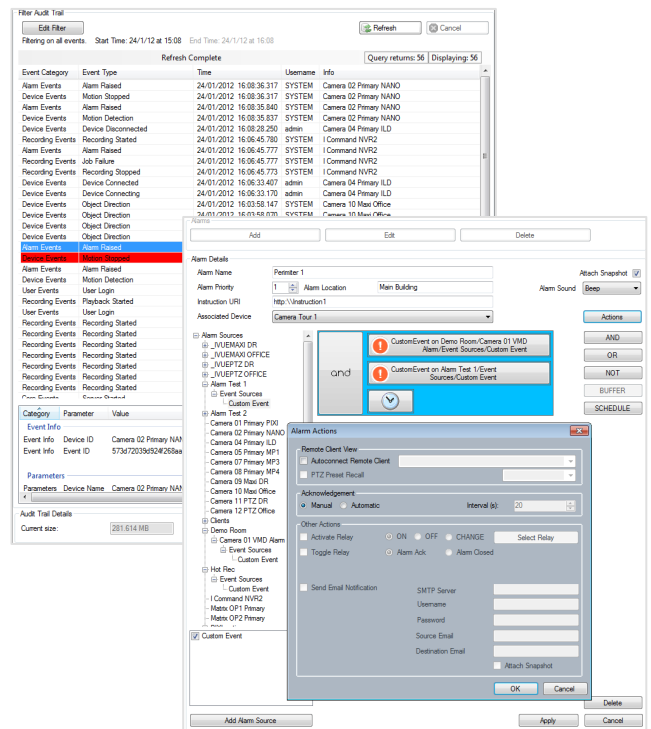
CE

Product codes

I-CMD SRV250-SBEL I-Command Elite Server system. Includes: 1U 19" Server including 4x RAID bays and 2x dual hot-swappable power supplies and I-Command Elite Management 250 device channel Server Application License.
I-CMD SRV500-SBEL I-Command Elite Server system. Includes: 1U 19" Server including 4x RAID bays and 2x dual hot-swappable power supplies and I-Command Elite Management 500 device channel Server Application License.
I-CMD SRV1000-SBEL I-Command Elite Server system. Includes: 1U 19" Server including 4x RAID bays and 2x dual hot-swappable power supplies and I-Command Elite Management 1000 device channel Server Application License.



Remotely configurable users, groups and device access rights



Powerful alarm management and audit trails

